

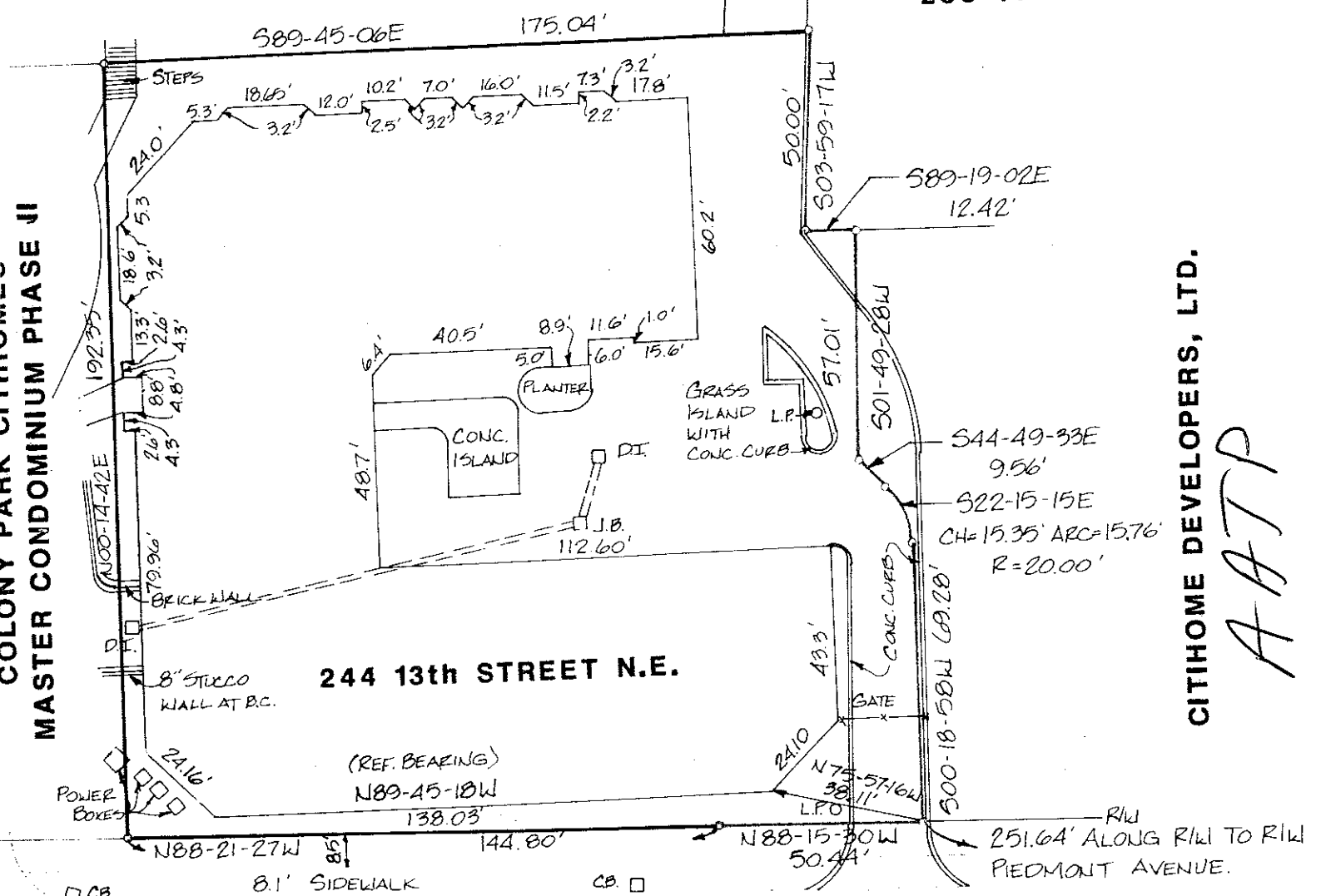
COLONY PARK CITHOME I CONDOMINIUM

253 14th STREET N.E.

**COLONY PARK CITHOME I
MASTER CONDOMINIUM PHASE II**

CITHOME DEVELOPERS, LTD.

AATP



244 13th STREET N.E.

(REF. BEARING)
N89-45-18W

STREET N.E.

25.3' PVM'T.

7.4' SIDEWALK

13TH STREET

In my opinion this plat is a correct representation of the land platted and has been prepared in conformity with the requirements of